

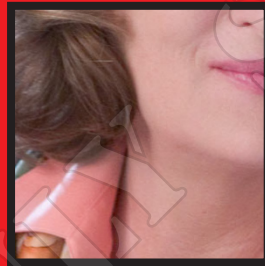


## Cluedunnit

You'll find the answers to the following clues appearing in straight lines in our box of letters. They may read forwards, backwards, up, down or even diagonally. As you find each answer, cross off its letters. Those letters left over when you have solved each clue will spell the name of an actress who learnt the violin for her lead role as a violin teacher in a 1999 film.

- Prince Philip is Duke of this Scottish city
- Volcanos ooze this hot molten rock
- A knight's protective suit
- *Dead Poets Society* was directed by Peter ...
- Hungarian spice made from red pepper
- National population count
- Unscramble SOLO to give Norway's capital
- Romantic comedy, *When Harry ... Sally*
- These African falls were named after a British queen
- A palm which gives a starch used in puddings
- Actors Lancaster & Reynolds
- A tadpole grows into this animal
- Coal mine
- Oscar-nominated star of *The Elephant Man*, John ...
- A sultan's group of wives
- Female striped big cat
- The bonnie, bonnie banks of Loch ...
- Speed of sound measurement unit
- This cosmetic surgery is fashionable in Hollywood
- Renowned Pakistani cricketer, ... Khan
- A mare's baby
- Temperature scale named after a Swedish astronomer
- Waltz capital of the world

H	M	A	I	R	O	T	C	I	V	E	
G	U	R	T	I	G	R	E	S	S	Y	
R	O	R	M	E	A	L	L	A	O	F	
U	U	R	T	W	S	U	S	N	E	C	
B	A	U	F					I	N	A	A
N	S	O	I					U	E	K	D
I	R	M	L					S	I	U	N
D	O	R	E	H	T	A	R	V	R	O	
E	J	A	C	R	R	P	A	E	L	M	
R	A	A	A	V	A	L	I	S	E	O	
F	M	E	F	P	L	H	O	T	P	L	



- Cartoon character, ... Flintstone
- Roman emperor who gives his name to a salad
- Robert ... is famous for his portrayal of a Napalm-loving general in *Apocalypse Now*
- Army rank

© Lovatts Publications

Solution: Edinburgh, lava, armour, Weir, paprika, census, Oslo, Met, Victoria, sago, Burt, frog, pit, Hurt, harem, tigress, Lomond, Mach, face-lift, Imran, Duval, major, MERYL STREEP.

**For Syndication enquiries:**

**email Lovatts at [syndication@lovatts.com.au](mailto:syndication@lovatts.com.au)**

**or phone Katrina Keppie on +61 (0)2 4325 4199**